

Tiger Tales

Madison Elementary
510 N. Palmetto Ave.
Marshfield, WI 54449
March 2020



From the Desk of Mrs. Scheer

"Mistakes are proof you are trying, and correcting mistakes are proof that you are growing" In March we are working on correcting our mistakes and learning along the way. We have so many opportunities to practice this as we go through our daily routine and we can only get better each day! Remember you can contact me at any time by calling the school or emailing me scheer@marshfieldschools.org. Thank you for being an important part of our #madisonfamily!

Madison Elementary is on Instagram

Follow us @madisonelemmarshfield on Instagram to see the latest activities and happenings! Tag us with the hashtags #madisonfamily & #madisonproud
Scan the QR code or name tag to get started!



Madison Elementary is on YouTube



<https://www.youtube.com/channel/UCLq6EC5jFuVDOP9a7O08P5g>

Madison Happenings & Events

March 2: McDonalds Dine to Donate 4:00-7:00

March 11: School Board Meeting 7:30 - Board of Education Office

March 16: PTO Meeting 6:00 - Madison Library

March 18: PTO Clark Pizza Delivery

March 23-May1: Wisconsin Forward Testing Window

March 24: Title I/ CLC Family Literacy Engagement Night 4:00-6:00 Madison Library

March 27: Noon Dismissal

March 30- April 3: Spring Break

April 6: Classes Resume

Congratulations!!!! PBIS Monthly Winners

Super Tiger: Student of the Month – Cohen C. & Logan B.

Tidy Tiger: Cleanest Room – Mr. K's 3rd Grade

Golden Spoon: Excellent Cafeteria Manners – 2nd Grade

Growth Mindset Teacher of the Month – Mrs. Wipfli & Mrs. Dejarlais



Forward Testing News

Wisconsin Students in Grades 3-8 & 10 will be participating in the Wisconsin Forward Exam assessment during the spring state testing window. Our school is scheduled to take the Wisconsin Forward Exam assessment on various dates this Spring. Please see the table at the bottom of this letter for specific grade level testing times.

The Wisconsin Forward Exam assessment tests students in the areas of English Language Arts (ELA), Mathematics, Science and Social Studies. One or more subtests may be administered daily during the identified time frame. It is very important that your student be in school during this time. Students not in school on the scheduled testing days will be scheduled for a make-up test prior to the close of the testing window.

The Wisconsin Forward Exam assessment measures the knowledge and skills your student(s) should have acquired by the time they reach each grade level. Their performance on the assessment will not affect any of their current grades. However, the scores on this assessment are what the Wisconsin Department of Public Instruction uses to calculate school grades. This is the one chance we have as a school to show off what we know. Therefore, please encourage your student to take the test seriously and do the best they can. We know testing can be a stressful time, but we are confident that our students are prepared, and we know they will do their best.

Attached is an *Informational Brochure for Families* which gives more information about the assessment including its purpose, what scores will be provided, and how the scores will be used. If you have any questions, please contact Mrs. Scheer at 715-384-8181.

Grade 3	Grade 4	Grade 5	Grade 6
March 24: ELA Session 1 March 27: Math Session 1 April 6: Math Session 2 April 7: ELA Session 2 & 3 April 8: ELA Session 4	March 26: ELA Session 1 April 21: ELA Session 2 & 3 April 22: ELA Session 4 April 23: Social Studies Session 1 April 24: Social Studies Session 2 April 27: Math Session 1 & Science Session 1 April 28: Math Session 2 & Science Session 2 April 29: Science Session 3	March 23: ELA Session 1 April 15: ELA Session 2 & 3 April 16: ELA Session 4 April 17: Math Session 1 April 20: Math Session 2	March 25: ELA Session 1 April 9: ELA Session 2 & 3 April 10: ELA Session 4 April 13: Math Session 1 April 14: Math Session 2



When does the Forward Exam take place?

The Forward Exam will be given in schools between March 23 and May 1, 2020. Schools are permitted to select their own testing dates within this window.

What type of scores will be provided?

The Forward Exam is a summative assessment that provides information about what students know and can do in relation to the Wisconsin Academic Standards. Students receive a score based on their performance in each content area. Each score will fall in one of four levels:

- **Advanced** – Student demonstrates **thorough** understanding of and ability to apply the knowledge and skills for their grade level that are associated with college content-readiness.
- **Proficient** – Student demonstrates **adequate** understanding of and ability to apply the knowledge and skills for their grade level that are associated with college content-readiness.
- **Basic** – Student demonstrates **partial** understanding of and ability to apply the knowledge and skills for their grade level that are associated with college content-readiness.
- **Below Basic** – Student demonstrates **minimal** understanding of and ability to apply the knowledge and skills for their grade level that are associated with college content-readiness.

Where can I find sample or practice test questions?

An Online Tools Training (OTT) and practice items are available for students at <http://dpi.wi.gov/assessment/forward/sample-items>. The OTT gives students the opportunity to practice using the tools available on the Forward Exam, as well as allow them to familiarize themselves with the testing platform. The Item Samplers include a sample of the type of content and items students will encounter on the exam. The OTT and Item Samplers are not scored, and do not cover the full range of content on the exam. These are intended to provide examples of items and give students practice taking an online test.



Wisconsin Forward Exam

Information for Families 2019-20



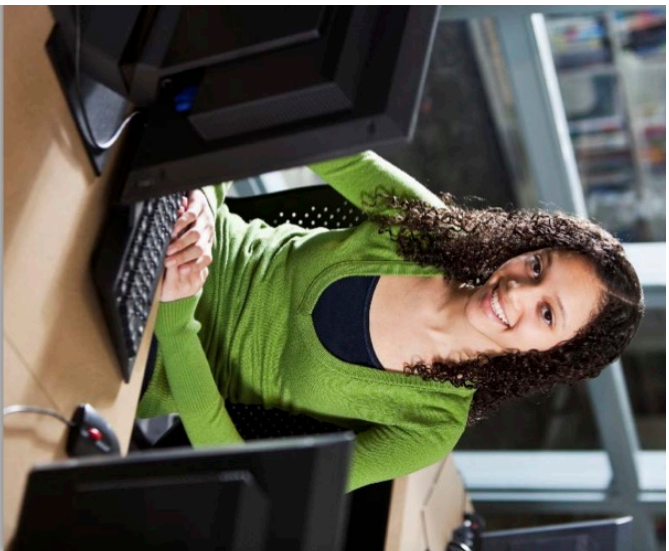
For more information contact the Office of Student Assessment at osamail@dpi.wi.gov



dpi.wi.gov/assessment/forward

September 2019

The Wisconsin Department of Public Instruction does not discriminate on the basis of sex, race, color, religion, creed, age, national origin, ancestry, pregnancy, marital status or parental status, sexual orientation, or disability.



The Forward Exam includes several question types:

- **Multiple-Choice (MC)**
Question that has four answer choices, including three distractors and one correct answer.
- **Enhanced Selected Response (ESR)**
Question which may contain combinations of MC, short-answer, and technology-enhanced.
- **Evidence-Based Selected Response (EBSR)**
Question which has two parts. The student answers Part A, then provides evidence in Part B to support answer in Part A.
- **Text-Dependent Analysis (TDA)**
Question used on the ELA test. The TDA is a text-based analysis, based on a passage that is read by students during the assessment. In order to develop a comprehensive, holistic essay response, students must draw on basic writing skills while inferring and synthesizing information from the passage. Students have up to 5000 characters to formulate their response.
- **Technology-Enhanced (TE)**
TE questions allow for a more engaging, interactive assessment. A wide variety of TE questions are present on the Forward Exam including:
 - Clock Input
 - Angle Draw
 - Short Input
 - Bar Graph
 - Number Line

- Coordinate Graph
- Line Plot
- List
- Drag and Drop
- Drop-Down List
- Pictograph using Drag and Paste
- Circle Graph
- Matching
- Highlighting Text

Accommodations and supports for students with disabilities and/or English language learners are built into the system so that the progress of students can be accurately measured.

What does this mean for my child?

The Forward Exam is a summative assessment that gauges your child's achievement in the content areas tested compared to other students in the state. Along with local measures such as report cards, school-wide assessments, and other information about your child's progress in school, the results from the Forward Exam provide insight into how well your child is doing on a broad measure of achievement.

What are the test times?

The estimated time for test administration in each grade is approximately:

- 2 hours and 10 minutes for ELA,
- 1 hour and 45 minutes for mathematics,
- 1 hour and 20 minutes for science, and
- 1 hour and 10 minutes for social studies.

These are estimated times, for the purpose of scheduling, as the Forward Exam is not a timed test.

What is the Wisconsin Forward Exam?

The Wisconsin Forward Exam is designed to gauge how well students are doing in relation to the Wisconsin Academic Standards. These standards outline what students should know and be able to do in order to be college and career ready. The Forward Exam is administered online in the spring of each school year at:

- grades 3-8 in English language arts (ELA) and mathematics,
- grades 4 and 8 in science and,
- grades 4, 8, and 10 in social studies.

Title I/ CLC Family Literacy Night

Family Literacy Night



February 21, 2020

Dear Grant, Lincoln, Madison, and Parochial Elementary CLC/Title I Families,

Title I is partnering with the Community Learning Center (CLC) after-school program for a Family Literacy Night on March 24th beginning at 4:00 pm. This event will take place at Madison Elementary in the library. Two 20-minute sessions will be offered on activities that build literacy skills and strategies for students in kindergarten through 6th grade. Childcare will be offered during the literacy presentations and children will have the opportunity to create bookmarks, read, or play in the gym during the literacy presentations.

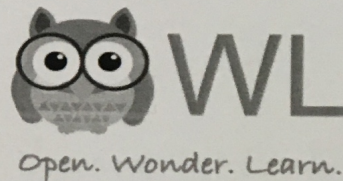
During each session families will learn fun activities and games that will help children build literacy skills in the areas of sight word recognition, spelling, vocabulary, and comprehension. Families will be provided with information on how to make reading enjoyable. To make our time extra fun, we will be giving away some great prizes and take-home literacy bags. Pizza will be served following the literacy presentations.

Come join us! All you need to do is sign up using the form below. Please send the bottom of this form with your child no later than March 16th, 2020. We look forward to seeing you!

Please make note of the date and time for the Title/CLC Family Literacy night:

Date: March 24th, 2020 from 4:00-6:00

Location: Madison Elementary LMC



Please fill out and return if you plan to attend.

We (names) _____ will attend the Family Literacy Night.
If you have any questions or concerns please email Ms. Melissa Christenson at christensonm@marshfieldschools.org or Ms. Natasha Rotar at rotar@marshfieldschools.org.

Number of children attending: _____ Age or grade of children: _____

Number of adults attending: _____

Growth Mindset Monthly News

March: Mistakes Are Opportunities for Learning - In March, we are going to practice normalizing mistakes, valuing mistakes as learning opportunities and working through our mistakes!

Madison PTO

A great way to get involved at Madison School is to become part of our parent teacher organization (PTO). We have an active and supportive PTO to which we are truly thankful. Look for our PTO on Facebook or email than at madisonpto510@gmail.com McDonalds night will be March 2nd from 4:00-7:00. 10% of the total sales in that time period will come back to Madison School. The class with the highest attendance will receive free ice cream from McDonalds. The PTO is holding elections for the PTO board. We are in need of a Vice President and Secretary beginning in the 2020 – 2021 school year. If you are interested please contact the PTO at madisonpto510@gmail.com by Friday, March 13, 2020. Elections will be held at the April PTO meeting.

Registration Information

It is time to verify your information in Skyward Family Access in the *Request Changes* section. Log into Family Access and click on the *Student Info* tab. This will allow you to update and submit changes for district approval at any time. If you will not be returning to the School District of Marshfield in September, please notify us of the city, state, and school where you will be moving. This can be done by clicking on the *Contact Us* tab in the upper right-hand corner of Family Access. You can also share this information with your school office as soon as you know. If you have moved during the school year or will be moving before the start of the new school year and want your child to remain at the school they are currently attending OR if you are requesting your student attend a school other than their neighborhood school for the upcoming school year, please complete the *Intradistrict Student Transfer Request* found on Family Access under Online Forms. Students currently in 4K will be placed at their neighborhood school. Current 6th grade students will receive further information from the Marshfield Middle School. Open house information and teacher placement will be in Family Access in mid-August.

Summer School

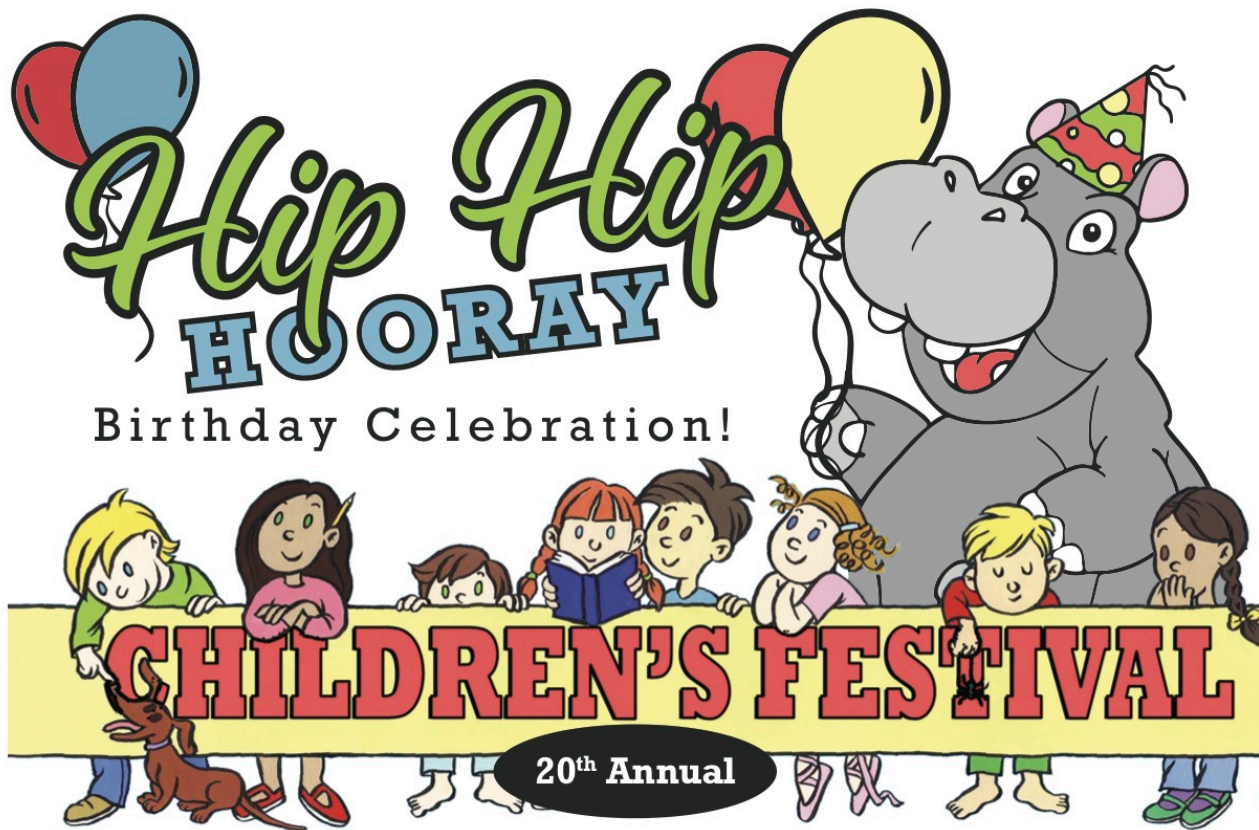
Parents look for the Summer School registration online April 14-23. You can register your child(ren) online through Skyward Family Access. Summer school courses are fun and they keep students learning new and exciting things throughout the summer.

School Closings

Radio Stations WDLB (AM 1450) and WOSQ (FM 92.3) will announce any school closings due to inclement weather. Other options for checking on school closings are to go on the school district's website at www.marshfieldschools.org or to watch channels 7 or 9 out of Wausau. The school district will also use an automated text messaging system to send an automated message to families announcing any school closings. In the event that school is closed early, it is especially important for working parents to make special arrangements for their children. Please devise a plan of action so that your children know where they should go in case school is closed during the day due to inclement weather.



Community News



**Saturday,
April 18, 2020
9:30am - 1:30pm**

**Visit OVER 50 booths
of fun and educational
activities for families!**

 **Like us on Facebook**
facebook.com/Marshfields-Childrens-Festival

**Marshfield High School
1401 E Becker Rd, Marshfield, WI
\$2 Admission**

The Children's Festival Supports the Marshfield Human Services Academy

HSA is a program at MHS located in the Tiny Tiger Intergenerational Center. HSA offers students the opportunity to learn through observation of children in Child Care Centers of Marshfield and interaction with elders in Companion Day Services. The unique curriculum allows students to confirm their interest in Human Service professions.



**marshfield
children's hospital**

HILLER'S
Behind Every Project is a
True Value
Just Ask
RENTAL

 **Partners
Bank**
better together.

"These activities are not sponsored nor endorsed by the Marshfield School District or any of its schools. The district assumes no responsibility for the conduct during or safety of activities. Marshfield School District shall be held harmless from any cause of action, claim, or petition filed in any court of administrative tribunal arising out of the distribution of these materials including attorney's fees and judgments or awards."



BREAKFAST

MARCH 2020

Elementary

March 2nd-6th is National School Breakfast Week
 This year's theme is "School Breakfast: Out of this World". Did you know National School Breakfast Week launched in 1989 and that more than 14 million children across the country participate in the school breakfast program each day?



MONDAY	TUESDAY	WEDNESDAY	THURSDAY	FRIDAY
2 HOT Pancake Bites Fresh Banana 100% Fruit Juice Milk	3 Very Berry Patch Smoothie Scooby Crackers Fruit Cup Milk	4 HOT Cinnamon Rolls 100% Fruit Juice Fruit Cup Milk	5 Yogurt Parfait HOMEMADE GRANOLA Dried Cranberries Strawberries/Blueberries Milk	6 HOT Breakfast Slider 100% Fruit Juice Fruit Cup Milk
9 Breakfast Kit <i>(includes cereal, crackers and 100% Juice)</i> Fruit Cup Milk	10 Breakfast Bread Fruit Cup 100% Fruit Juice Milk	11 HOT Fruit Strudel Fresh Fruit Fruit Cup Milk	12 Whole Grain Muffin String Cheese Fruit Cup 100% Fruit Juice Milk	13 HOT Mini Waffles Fruit Cup 100% Fruit Juice Milk
16 Whole Grain Cereal String Cheese Fresh Fruit Fruit Cup Milk	17 Yogurt Cup Frozen Crackers Fresh Fruit 100% Fruit Juice Milk	18 HOT Soft Filled Cereal Bar Fruit Cup 100% Fruit Juice Milk	19 HOMEMADE COFFEECAKE Nashville Dairy Cheese Fruit Cup & Fresh Fruit Milk	20 HOT Mini French Toast Fruit Cup 100% Fruit Juice Milk
23 Breakfast Kit <i>(includes cereal, crackers and 100% Juice)</i> Fruit Cup Milk	24 Mini Cream Cheese Filled Bagels Fruit Cup 100% Fruit Juice Milk	25 HOT Pancake/Stick Fresh Fruit 100% Fruit Juice Milk	26 HOMEMADE GRANOLA Dried Cranberries Strawberries/Blueberries Milk	27 HOT Breakfast Pizza 100% Fruit Juice Fruit Cup Milk
Farm to School				
See website for a food allergen/pork listing				

Menus are subject to change.

This institution is an equal opportunity provider.

MEAL PRICES
Breakfast Prices:
 Paid (Elementary): \$1.35
 Paid (MS/HS): \$1.50
 Reduced: \$0.25
 Adult/Seconds: \$2.00

Lunch Prices:
 Paid (Elementary): \$2.70
 Paid (Middle School): \$2.80
 Paid (High School): \$3.00
 Reduced: \$0.40
 Adult/Seconds: \$3.75
 Second Entree: \$2.25
 Milk: \$0.40

ICE COLD MILK OPTIONS:
 Fat Free White
 Low Fat White
 Fat Free Chocolate
 *All Meals Include

All grain and bread products are 100% whole grain



Breakfast Menu



LUNCH

March 2020

Elementary

MONDAY

TUESDAY

WEDNESDAY

THURSDAY

FRIDAY

National School Breakfast Week is March 2nd – 6th.

Did you know school breakfast can provide up to 25% of the recommended daily allowance of protein, calcium, iron and vitamins A and C?

School breakfast helps to build lifelong health eating habits!



2 WG Mac & Cheese Diced Ham Fresh Apple Pineapple Garden Salad w/ Tomatoes Fresh Carrots	3 Soft Shell Taco Fiesta Beans Pears Orange Wedges Lettuce, Tomatoes, Cheese	4 Mini Corn Dogs Apple Slices Mixed Fruit Fresh Broccoli Steamed Corn	5 Salisbury Steak over Mashed Potatoes w/ T-Bun Orange Wedges Dried Cranberries Garden Salad w/ Tomatoes Fresh Celery Sticks	6 French Toast w/ Little Smokies Fresh Grapes Strawberries Fresh Carrots & Cucumbers Maple Dude Maple Syrup
9 Pepperoni Pizza Oranges Pineapple Fresh Broccoli Baked Beans	10 Popcorn Chicken Fresh Apple Pears Fresh Carrots Mixed Vegetables	11 Cheeseburger on a Bun Watermelon Peaches Garden Salad w/ Tomatoes Steamed Corn	12 Spaghetti & Meatballs Garlic Toast Apple Slices Dried Cranberries Garden Salad w/ Tomatoes Fresh Sugar Snap Peas	13 Cheese Pizza Orange Wedges Applesauce Fresh Carrots Green Beans Blue Raspberry Sorbet
16 Chicken Snack Wrap Apple Slices Peaches Garden Salad w/ Tomatoes Steamed Broccoli Rice Krispy Treat	17 Shamrock Shaped Chicken Nuggets Orange Wedges Mixed Berry Cup Fresh Pepper Sticks Cooked Carrots	18 Walking Taco Apple Slices Pineapple Lettuce, Tomato, Cheese Fiesta Beans	19 Homemade Chicken Noodle Soup w/ Mini Sub Orange Wedges & Pears Garden Salad w/ Tomatoes Fresh Broccoli Featured: Strawberry Milk	20 Hot Cheesy Sticks w/ Marinara Sauce Fresh Grapes Mandarin Oranges Fresh Carrots Steamed Corn
23 Chicken Strips Apple Slices Peaches Garden Salad w/ Tomatoes Green Beans	24 Mini Corn Dogs Applesauce Orange Wedges Garden Salad w/ Tomatoes Baked Beans	25 Chicken Patty on a Bun Fresh Apple Pineapple Fresh Broccoli Mixed Vegetables V Blend Juice	26 BBQ Pork on a Bun Orange Wedges Pears Fresh Carrots Steamed Peas	27 EARLY DISMISSAL Cheese Omelet w/ Diced Ham & Bread Applesauce Strawberries Fresh Cucurber / Broccoli



Farm to School Meatless Entree
Menus are subject to change.

Featured Recipe

See website for food allergens, carbohydrate counts, pork product list and all featured recipes. www.marshfieldschools.org

This institution is an equal opportunity provider.

MEAL PRICES

Breakfast Prices:

Paid (Elementary): \$1.35
 Paid (MS/HS): \$1.50
 Reduced: \$0.25
 Adult/Seconds: \$2.00

Lunch Prices:

Paid (Elementary): \$2.70
 Paid (Middle School): \$2.80
 Paid (High School): \$3.00
 Reduced: \$0.40
 Adult/Seconds: \$3.75
 Second Entrée: \$2.25
 Milk: \$0.40

Online Meal Payments

Online meal payments are now available. Payments can be made through your Family Skyward Access. If you do not have your username/password, please stop into your school office.



All of our homemade breads and buns are 100% whole grain and baked fresh daily.



Ice cold milk options available daily: fat free white, low fat white, and fat free chocolate.

Lunch Menu